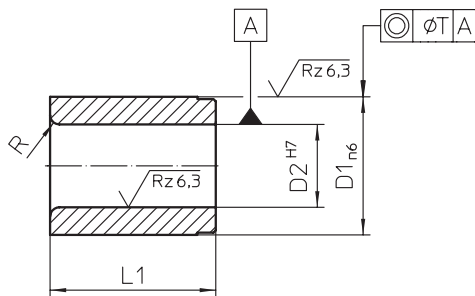


# BUSSOLA GUIDA PUNZONI

## GUIDE BUSHES

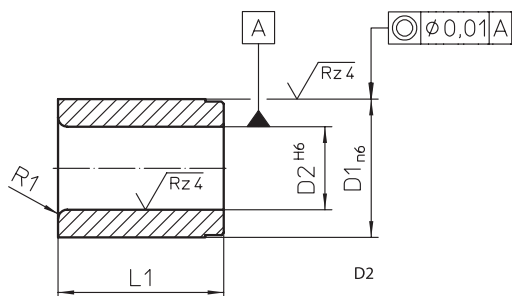


Bussola guida punzoni simile a DIN 9845

D2	Progressione	D1	R	L1 <sup>+0,5</sup>
1,0	0,10	5	1,0	9
1,1...2,0		6		12
2,1...3,0		7		
3,1...4,0		8		
4,1...5,0		10	1,5	16
5,1...6,0		12		
6,1...8,0		15		2,0
8,1...10,0		18		
10,1...12,0		22		
12,1...15,0		26		
15,5...18,0	0,50	30		36

# BUSSOLA GUIDA PUNZONI

## GUIDE BUSHES



Bussola guida punzoni simile a ISO 8978

D2	Progressione	D1	R	L1 <sup>+0,5</sup>	
1,0...2,4	0,10	5	1,0	8	
1,6...3,0		6		12,5	
2,0...3,5		8	2,0		
3,0...5,0		10			
4,0...7,2		13			
6,0...8,8		16			
7,3...11,3		20	2,5	20	
11,0...16,6		25			
15,0...20,0		32		4,0	
18,0...27,0		40			
26,0...36,0	0,50	50			32
					40

CODICE / Item no.

# SFB2

Materiale: acciaio speciale  
Material: special steel

Esecuzione: temperata in superficie, rinvenuta e rettificata  
Execution: temperate surface, tempered and ground

Durezza: Hrc 58÷ 62  
Hardness: Hrc 58÷62

**Esempio di ordine:**  
SFB2 D2xD1xL1

**Ordering - example:**  
SFB2 D2xD1xL1

CODICE / Item no.

# SFBISO

Materiale: acciaio speciale  
Material: special steel

Esecuzione: temperata in superficie, rinvenuta e rettificata  
Execution: temperate surface, tempered and ground

Durezza: Hrc 58÷ 62  
Hardness: Hrc 58÷62

**Esempio di ordine:**  
SFB2 D2xD1xL1

**Ordering - example:**  
SFB2 D2xD1xL1