

CODICE / Item no.

SBA
SBB

MATRICE DI TRANCIATURA DIN 9845

PIERCING DIE BUSHES DIN 9845

Materiale: acciaio super rapido (HSS)

Material: high speed steel (HSS)

Esecuzione: temperato, rinvenuto e rettificato
Execution: tempered, tempered and ground

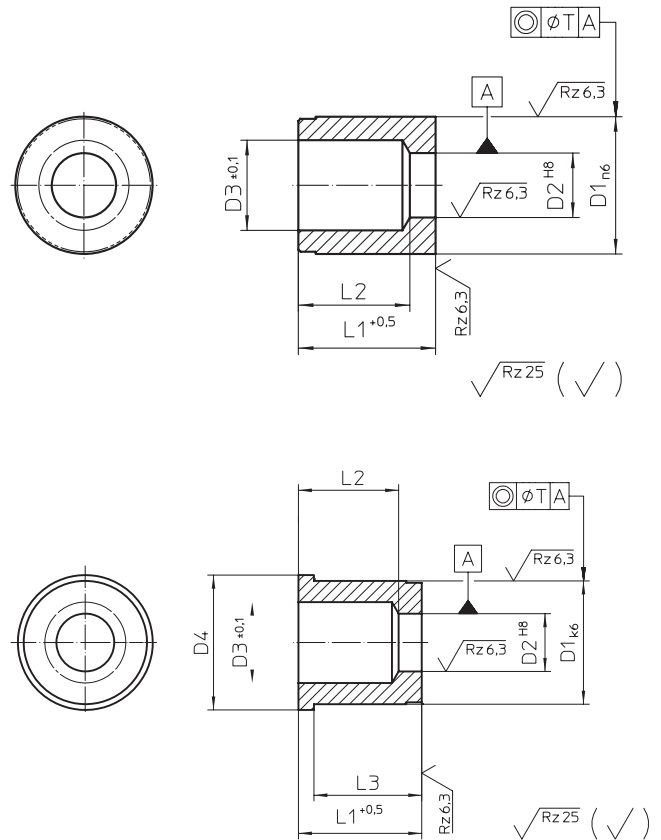
Durezza: Hrc 58 ÷ 62
Execution: Hrc 58 ÷ 62

Esempio di ordine:

SBA D2xD1xL1
SBB D2xD1xL1

Ordering - example:

SBA D2xD1xL1
SBB D2xD1xL1



D2	STEP	Form A	Form B	D4	D3	L2	L3	L1
		D1 n6	D1 k6					
1,0	0,10	5	7	D2+0,3	18	16	20	
1,1...2,0		6	8		17	24	28	
					25			
2,1...3,0		7	9	D2+0,5	17	16	20	
3,1...4,0		8	10		25	24	28	
					17	16	20	
4,1...5,0		10	12	D2+0,7	16	16	20	
5,1...6,0		12	14		24	24	28	
					16	16	20	
6,1...8,0		15	17	D2+1,0	16	16	20	
8,1...10,0		18	20		24	24	28	
					15	16	20	
10,1...12,0	22	24		23	24	28		
12,1...15,0	26	28		15	16	20		
15,5...18,0	0,50	30	32	23	24	28		