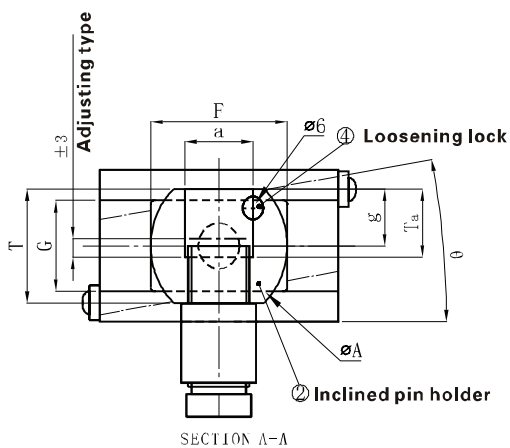
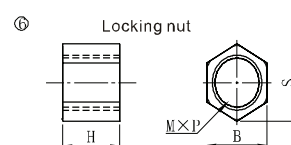
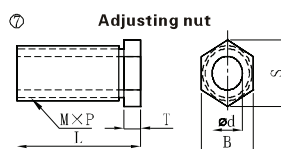
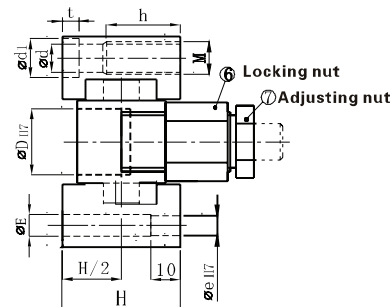
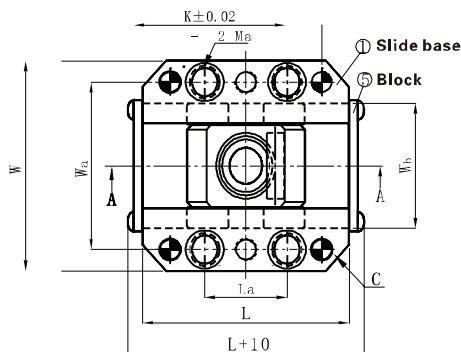


CARRELLI PER ESTRAZIONE

INCLINED EJECTOR CORE UNIT

CODICE / Item no.

S KOCU M



Code	T	G	F	A	a	g	Ta
S KOCU M16	24	24	45	30	13	10	15
S KOCU M20	30	24	45	40	17	13	18
S KOCU M25	35	26	50	45	22	14	20,5
S KOCU M30	38	30	60	50	27	15	22

Code	D	W	Wa	L	La	K	Ma	Wb	C	d	d1	t	h	M	e	E	H
S KOCU M16	16	64	50	70	25	50	M8	36	6	6,6	11	6,5	20	M8	6	6,6	40
S KOCU M20	20	76	60	75	30	55	M10	43	8	8,6	14	8,5	25	M10	8	9	46
S KOCU M25	25	81	65	85	40	65	M10	48	8	8,6	14	8,5	25	M10	8	9	48
S KOCU M30	30	88	72	100	50	80	M10	55	8	8,6	14	8,5	25	M10	8	9	54

Code	M x P	L	T	d	S	B	H	S	B	0 Increments of 1°	0 Increments of 1°
S KOCU M16	M14 x 1,5	42	6	9	16,2	14	21	19,6	17	0°	0° - 10°
S KOCU M20	M18 x 1,5	45	6	11	21,9	19	21	25,4	22	0°	0° - 10°
S KOCU M25	M22 x 1,5	49	7	13	25,4	22	21,5	31,5	27	0°	0° - 10°
S KOCU M30	M27 x 1,5	55	7	13	31,2	27	26	37,0	32	0°	0° - 10°