

7990

CENTRAGGIO CILINDRICO A RULLI ROUND FINE CENTERING

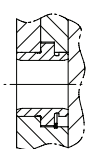
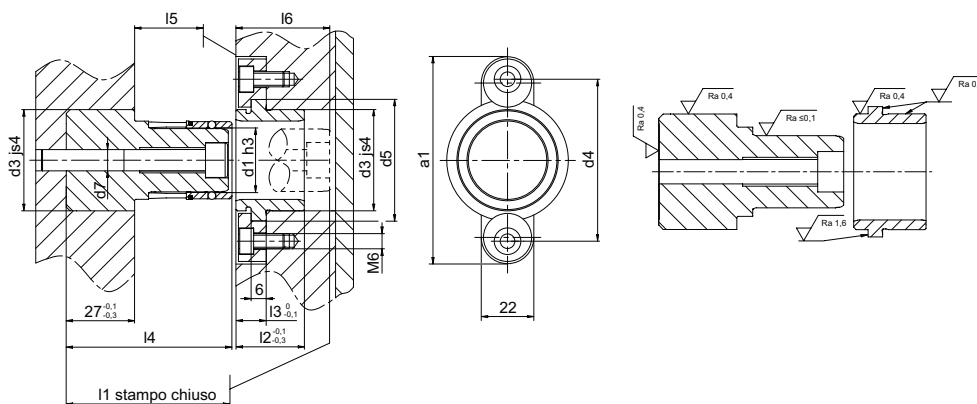
Materiale bussola:
100 Cr6 - 1.3505
temprato 62 - 64 HRC
d1 ≤ 25 mm

Material of the bushes, rollers:
100 Cr6 - 1.3505, hardened 62
- 64 HRC

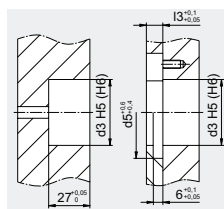
Materiale gabbia:
alluminio 7990-7992
ottone 7993

Material of the cage:
aluminum 7990-7992
brass 7993

Colonna di centraggio:
16MnCr5, temprato 61-63 HRC
*Centering pillar: 16MnCr5,
hardened 61 - 63 HRC*



Bussola installabile da entrambi i lati



Situazione di montaggio



Articolo	d1	d3	d4	d5	a1	d7	l1	l2	l3	l4	l5	l6	C, C ₀ [N] - Valore indicativo
7992.010.036	10	20	27	26	-	5.2	36	19	7	38.5	~ 11	-	Entrata (C): 630 Chiuso (C ₀): 1050
7990.015.049	15	28	52	36	69	6.8	49.5	22.5	12	51.5	~ 14	-	Entrata (C): 1400 Chiuso (C ₀): 4700
7990.025.054	25	40	64	48	81	8.5	54	27	12	55.5	~ 18	-	Entrata (C): 2150 Chiuso (C ₀): 10800
7990.032.057	32	48	70	54	87	8.5	57	30	12	59.5	~ 20	-	Entrata (C): 2750 Chiuso (C ₀): 13800
7993.015.059	15	28	52	36	69	6.8	59	22.5	12	61	23	32	Entrata (C): 1400 Chiuso (C ₀): 4700
7993.025.064	25	40	64	48	81	8.5	64	27	12	65.5	28	37	Entrata (C): 2150 Chiuso (C ₀): 10800

C = carico dinamico in N - Capacità di carico iniziale
C₀ = carico statico in N - Stampo completamente chiuso
C = dynamic load rating in N - Initial load capacity
C₀ = static load rating in N - Tool fully shut